

# Geared Steering Pedestals

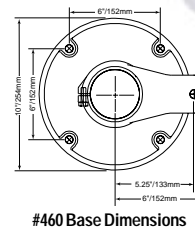
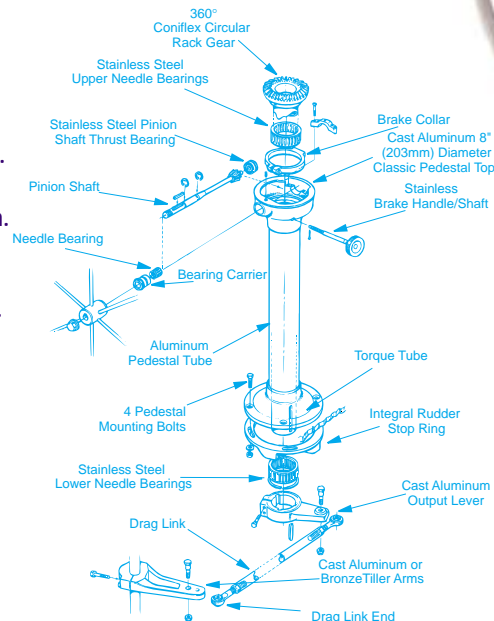
## Edson Classic™ CD-i Pedestal

- Classic Pedestal Design Increases Usable Cockpit Space.
- Durable Glossy White Baked-On Urethane Finish.
- Accepts all Styles of Edson Wheels.
- Custom Design Your Own Instrument Control Center.
- Matches all Edson Accessories: Guards, Instrument Housing, Drink Holders, Tables.
- Hex Head Recesses in Base Hold Edson's Aluminum Bolts for Easy One Person Installation.
- Fits Binnacle Compasses up to 6" Dial Size.
- Comes with standard 1" tapered shaft.

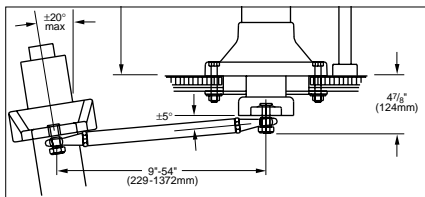


### Edson CD-i Features:

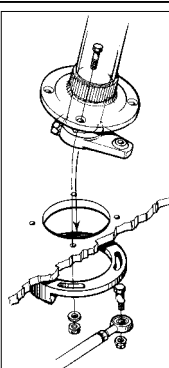
- 360° Circular Rack Gear – 3 Times the Life Span of Conventional Rack Gears.
- 1.8 Wheel Turns Hard-Over to Hard-Over through 72° of rudder travel.
- 17-4PH H-900 and H-1100 Stainless Gleason Conflex™ Gears for Ultra-High Strength.
- Gear teeth easily accessible for lubrication and inspection.
- Large 3 1/4" / 83 mm Torque Tube for Superior Strength, Stiffness and Wire Clearance.
- Turnbuckle-Style Drag Link for Easy Adjustment.
- Large 3 1/2" / 89 mm Diameter Stainless Bearings for Long Life.
- Designed and Built to ISO Standards.
- CE Compliant.



460 Classic CD-i Pedestal shown with optional accessories. See page 34 for additional guards.



Maximum Rudder Rake = 20° from Vertical  
 Working Angle of Drag Link = ± 5° Max. from Horizontal with Rudder Amidships.  
 Max. Rudder Torque Load = up to 3,400 ft. lbs. (467 mkg)  
 Typical Installations Suitable for Aft Cockpit Sailboats up to 50 Feet LOA (15.25 m)



### Rudder Stops and Edson's Stop Ring

Rudder Stops are a mandatory fitting for any steering arrangement. They insure that loads transmitted through the rudder never exceed the design limit of the steering pedestal and gear. Edson's Integral Stop Ring/Backing Plate provides an alternative to conventional rudder stops that is much simpler to install and adds additional reinforcement to the cockpit floor. All Edson Stop Rings are marked with angle-indicators for easy installation and adjustment and allow for 72° of total rudder travel.

Note: Conventional rudder stops and cockpit reinforcement should still be installed in conjunction with the stop ring whenever possible.